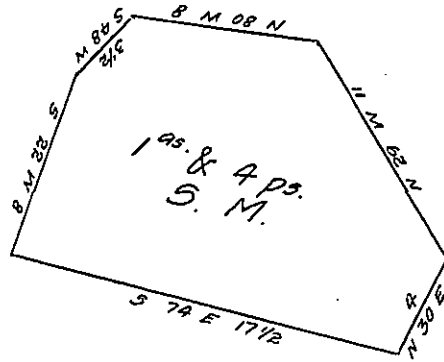


YORK COUNTY SHORE.



Lancaster County Shore.

A Draught of little walnut Island situate in the river Susquehanna in Manor township Lancaster County opposite land of Philip Sowers on the East land of Jacob Musser on the west about forty perches from the Lancaster Shore, & near the lower end of end of big walnut Island containing one acre & four perches strict measure surveyed in pursuance of a warrant dated 13 August 1814 granted to Charles Evans & John Dicks.

Jacob Hibshman. D.S.

To Jacob Spanqler Esq.  
Surveyor General.

IN TESTIMONY that the above is a copy of the original remaining on file in the Department of Internal Affairs of Pennsylvania, made conformably to an Act of Assembly approved the 16th day of February 1833, I have hereunto set my hand and caused the Seal of said Department to be affixed at Harrisburg, this third day of January 1908

*Henry Howell*  
Secretary of Internal Affairs.